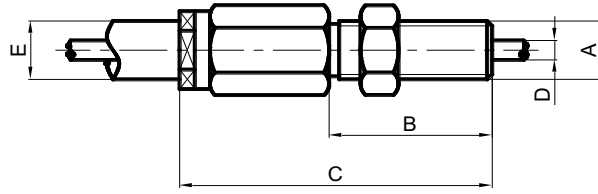


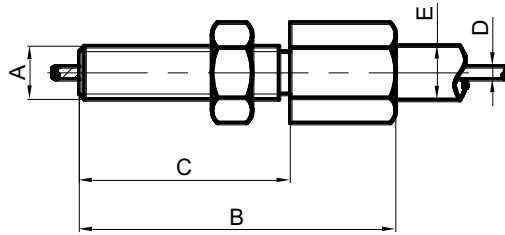
Metal Screw Fitting - Rivet & Can't Rotate

No.	Material	Dimensions				
		Thread	Total length	Screw length	Wire diameter	Conduit diameter
		<u>A</u>	<u>B</u>	<u>C</u>	<u>D</u>	<u>E</u>
1	HPB61-2	M4	17	10	≤1	φ3.65
2	HPB61-2	M4	19	12	≤1	φ3.65
3	12L14	M4	24	14	≤1	φ3.65
4	HPB61-2	M4	27	20	≤1	φ3.9/φ4
5	12L14	M5	25	17	≤1	φ3.65
6	06-10	M5	25	16	≤1.8	φ5.0
7	06-10	M5	28	18	≤1.8	φ5.0
8	06-10	M5	31	21	≤1.8	φ5.0
9	06-10	M6	26	16	≤1.8	φ5.0
10	06-10	M6	31	21	≤1.2	φ3.9/φ4
10	06-10	M6	31	21	≤1.8	φ5.0
11	06-10	M6	35	25	≤1.8	φ5.0
12	06-10	M6	45	35	≤1.8	φ5.0
13	06-10	M8	52	40	≤1.8	φ5.0
14	06-10	M8	60	40	≤2.0	φ6.0
15	06-10	M8	65	45	≤2.5	φ10
16	06-10	M8	70	55	≤2.5	φ7.0
17	12L14	M10	63	48	≤4.2	φ9
18	12L14	M10	68	43	≤4.2	φ10



Metal Screw Fitting - Rivet & Can Rotate

No.	Material	Dimensions				
		Thread	Total length	Screw length	Wire diameter	Conduit diameter
		<u>A</u>	<u>B</u>	<u>C</u>	<u>D</u>	<u>E</u>
1	12L14	M5	29	17	≤2	φ6
2	12L14	M5	39	27	≤2	φ6
3	12L14	M5	35	20	≤1.2	φ4.36
4	06-10	M5	36	24	≤2	φ6
5	06-10	M6	27	15	≤2	φ6
6	06-10	M6	27	11	≤1.8	φ5
7	12L14	M6	35.5	20	≤1.8	φ5
8	12L14	M6	38	22	≤1.8	φ5
9	12L14	M6	40	24	≤1.8	φ5
10	06-10	M6	41	25	≤2.5	φ7



Metal Screw Fitting - Can't Rivet & Can Rotate

No.	Material	Dimensions				
		Thread	Total length	Screw length	Wire diameter	Conduit diameter
		<u>A</u>	<u>B</u>	<u>C</u>	<u>D</u>	<u>E</u>
1	12L14	M5	27	19	≤1.2	φ4
2	12L14	M5	30	20	≤1.8	φ5
3	12L14	M5	38	20	≤1.8	φ5
4	12L14	M6	24	17	≤1.8	φ5
5	06-10	M6	28	20	≤1.8	φ5
6	06-10	M6	34	21	≤1.8	φ5
7	12L14	M6	36	18	≤1.8	φ5
8	12L14	M6	37	25	≤1.8	φ5
9	06-10	M6	40	30	≤1.8	φ5
10	12L14	M6	53.5	40	≤1.8	φ5